

MEMOR™ 11 FAMILY OF MOBILE COMPUTERS

Optimized performance and flexibility in a market-proven design



memor11
F A M I L Y



FLEXIBILITY TAILORED FOR YOUR WORKFORCE

The Memor 11 family is designed to provide a versatile solution for today's mobile workforce. With an up-to-date operating system and enhanced processing capabilities, this family of devices deliver superior scanning performance and all-around efficiency. Whether you require flexibility in Retail, Warehouse, Manufacturing, or Transportation & Logistic applications, the Memor 11 family is built to meet your needs. Choose between Wi-Fi only or Wi-Fi/Cellular models to always be connected within your premises or wherever you go.

RUGGED AND COMPACT DESIGN IN AN ENTERPRISE-GRADE FORM FACTOR

The market-proven, semi-rugged, and compact design of the Memor 11 follows the highly successful Memor 10 and can withstand more tumble hits than most comparable devices in the market.

ADVANCED BATTERY MANAGEMENT AND WIRELESS CHARGING

Agile performance due to its long-lasting swappable battery and embedded SafeSwap™ Technology which ensures uninterrupted continuity. Its effective wireless charging system provides ultra-reliable contactless charging that helps reduce maintenance and promotes efficient charging.

IMPROVED SCANNING PERFORMANCE

Heighten scanning performance in dark warehouse environments with the high-end 2D scan engine, plus increased accuracy and efficiency when paired with Datalogic's exclusive 'Green Spot' Technology in scan-intensive settings.

ENTERPRISE-READY SOLUTION; A SECURE INVESTMENT

Certified as an Android™ Enterprise Recommended device with fortified security and privacy settings of Android 11, plus the benefits of Google Mobile Services.

FEATURES

- Dedicated Wi-Fi Only and Wi-Fi/Cellular models
- Market-proven design, compact and robust
- Superior processing capabilities + 4GB of RAM
- 5-inch capacitive multi-touch HD display
- Android 11 with Google Mobile Services (upgradeable to Android 14)
- Ultra-slim 2D imager enhanced for dark environment performance + Datalogic's exclusive 'Green Spot' technology for visual good-read feedback
- Ultra-reliable swappable battery with SafeSwap™ capability and Smart Battery Management
- Contactless wireless charging helps reduce maintenance costs and promotes proper charging of the device
- Chemical resistant enclosure designed to withstand daily cleaning with harsh disinfectant solutions
- Backward compatible with all existing Memor 10 accessories
- Access to full suite of value-added Datalogic Software Applications Tools
- EASEOFCARE Service Plans and Datalogic Shield to extend lifecycle and extend years of protection on the device.

INDUSTRY - APPLICATIONS

- **Retail:**
 - Assisted sales
 - Inventory Management
 - Markdowns / Markups
 - Shelf Replenishment
 - Online Order Fulfillment
 - BOPIS / BORIS
 - Access control / Ticketing
 - Hospitality: Order taking
- **Warehouse & Manufacturing:**
 - Inbound / Outbound Logistics
 - Sort, Pick, and Pack
 - Shipping / Receiving
 - Production & Quality Control
 - Inventory Management
 - Track & Trace
 - Intralogistics
- **T&L:**
 - Field Service / Maintenance
 - Deliveries / DSD
 - Route accounting / Order processing
 - Proof of Delivery / Damage
 - Workforce management

MEMOR 11 FAMILY OF MOBILE COMPUTERS

TECHNICAL SPECIFICATIONS

WIRELESS COMMUNICATIONS

Local Area Network (WLAN)	IEEE 802.11 a/b/g/n/ac and 802.11 d/h/i/k/r/v/w; Wi-Fi alliance Certification; WPA3 (Personal and Enterprise)
Personal Area Network (WPAN)	Class 2, Bluetooth® V5.0, Low Energy (BLE) Support
NFC Communication	Support for the following standards: ISO14443-4 (type-A, type-B); ISO15693; Mifare; Felica
*WWAN Cellular	LTE-Advanced / 4G+; Cat 6 • EMEA and ROW Configuration: GSM: Quad band; WCDMA: B1/5/8; FDD_LTE: B1/3/5/7/8/20/28; TDD_LTE: B38/39/40/41 • North America Configuration (PTCRB certified): GSM: Quad band; WCDMA: B1/2/4/5/8; FDD_LTE: B2/4/5/7/12/13/17/25/26/28
Global Positioning System (GPS)	Integrated Assisted-GPS (A-GPS) Supported Types: GPS, GLONASS, BeiDou

*Only applies to Wi-Fi/Cellular Model

DECODING CAPABILITY

1D / Linear Codes	Auto discriminates all standard 1D codes including GS1 DataBar™ linear codes.
Digital Watermark Codes	Digimarc® Barcode
2D Codes	Aztec Code, Data Matrix, HanXin Code, MaxiCode, MicroQR Code, QR Code, Dotcode
Postal Codes	Australian Post, Japan Post, KIX Code, PLANET, POSTNET, Royal Mail Code (RM4SCC), USPS Intelligent Mail
Stacked Codes	Micro-PDF417, PDF417, GS1 Composite, GS1 DataBar Expanded Stacked, GS1 DataBar Stacked, GS1 DataBar Stacked Omnidirectional, OCR (ID Cards, Passport)

ELECTRICAL

Battery	Replaceable battery pack with rechargeable Li-Ion batteries; 3.8 V; 4,100 mAh (15.6 Watt-hours)
Wireless Charging	10 Watt fast charging

ENVIRONMENTAL

Drop Resistance	Withstands drops from 1.5 m / 5.0 ft onto concrete (with rubber boot); Withstands drops from 1.2 m / 4.0 ft onto concrete (without rubber boot). Tested onto steel/concrete according to IEC 60068-2-32 Method 2 and MIL STD 810H Transit drop test.
Tumbles	Withstands 1,000 hits from 0.5 m / 1.6 ft and 250 hits from 1.0 m / 3.2 ft per IEC 60068-2-32 with rubber boot; Withstands 600 hits from 0.5 m / 1.6 ft per IEC 60068-2-32 without rubber boot
Particulate and Water Sealing	IP65
Chemical Resistance	Chemical cleanser and industrial oil resistant
Healthcare Cleanable	Isopropyl Alcohol, Hydrogen Peroxide, Clorox® Bleach; applicable for both the device and docks
Temperature	Operating: -20 to 50 °C / -4 to 122 °F Storage/Transport: -30 to 70 °C / -22 to 158 °F

INTERFACES

Interfaces	USB-C: High Speed USB 2.0 Host and Client
-------------------	-------------------------------------------

SENSORS

Vibration	Software programmable for duration and intensity
Magnetometer	Senses orientation (eCompass)
Accelerometer	3-Axis accelerometer to detect orientation
*Gyroscope	Senses angular velocity *(Wi-Fi/Cellular model only)
Ambient Light	Auto adjusts display backlight
Proximity	Auto deactivates display when close to face

PHYSICAL CHARACTERISTICS

Dimensions	15.5 x 7.8 x 1.87 cm / 6.1 x 3.07 x 0.73 in
Display	5 inch IPS HD resolution 720 x 1280; LED backlight; Touch Screen: 5 points multi-touch capacitive panel with Dragontrail hardened glass
Keys	Physical Keys: 2 side scan keys; Power On/Off; Volume Up/Down; 3 user programmable Android™ keys
Weight	With Battery: 285.0 g / 10.0 oz

READING PERFORMANCE

Camera	Resolution: 13 megapixel; Illumination: User controllable LED flash; Lens: Auto focus
Scan Engine	2D Ultra slim area imager (supports 1D / 2D codes); Datalogic's 'Green Spot' for good-read feedback; Halogen™ DE2102-HP; Depth of Field: 4 to 90 cm / 1.6 to 35 in, depending on bar code density and type; Resolution: Megapixel (1280 x 800 pixels); Illumination: White and Red LEDs (for Digimarc); Aiming: 650nm VLD; Field of View: 42°H x 26°V
Print Contrast (Minimum)	25%

Minimum Element Width	Halogen™ DE2102-HP: 1D Linear: 0.0635 mm / 2.5 mils; PDF: 0.0762 mm / 3 mils; Data Matrix: 0.152 mm / 6 mils
------------------------------	-----------------------------------------------------------------------------------------------------------------

SAFETY & REGULATORY

Agency Approvals	The product meets necessary safety and regulatory approvals for its intended use.
Environmental Compliance	Complies to EU RoHS

SOFTWARE

Applications	Datalogic's SoftSpot technology for configurable soft triggers; Supports Datalogic's Queue Busting app; Enterprise class PTT available from Zello
Provisioning	Android Zero-Touch, QR Code enrollment, NFC Bump provisioning
Configuration and Maintenance	Scan2Deploy Studio, OEMConfig
Software Maintenance	Datalogic Shield: recurring security patches, firmware updates, and OS upgrades.
Development	Java, Cordova and Xamarin SDK available
MDM Compatibility	SOTI MobiControl, VMWare AirWatch, Ivanti Avalanche, 42Gears SureMDM, Microsoft Intune
Terminal Emulation Compatibility	StayLinked SmartTE, Ivanti Velocity

SYSTEM

Expansion Slots	Micro-SD card slot: Compatible with Micro SD-HC cards; Data transfer up to 48 Mbps; User-accessible
SIM Slot	MicroSIM Standard size
Memory	System RAM: 4 GB; eMMC Flash: 32 GB
Microprocessor	2 GHz Octa-core
Operating System	Android v11 with GMS / AER (Upgradeable to Android 14)
Real-Time Clock	Time and date stamping under software control

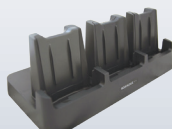
WARRANTY

Warranty	1-Year Factory Warranty
-----------------	-------------------------

ACCESSORIES



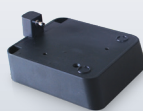
94A150095 Single Slot Charging Dock



94A150096 3-Slot Charging Dock



94ACC0192 4-slot Battery Charging Dock



Ethernet Adaptors (Single: 94ACC0297 / Triple: 94ACC0288)



94A150097 Vehicle Charging Dock



94ACC0201 Scan Trigger Handle



94ACC0193 Protective Boot



DLR-SLED01-EU RFID Reader Sled